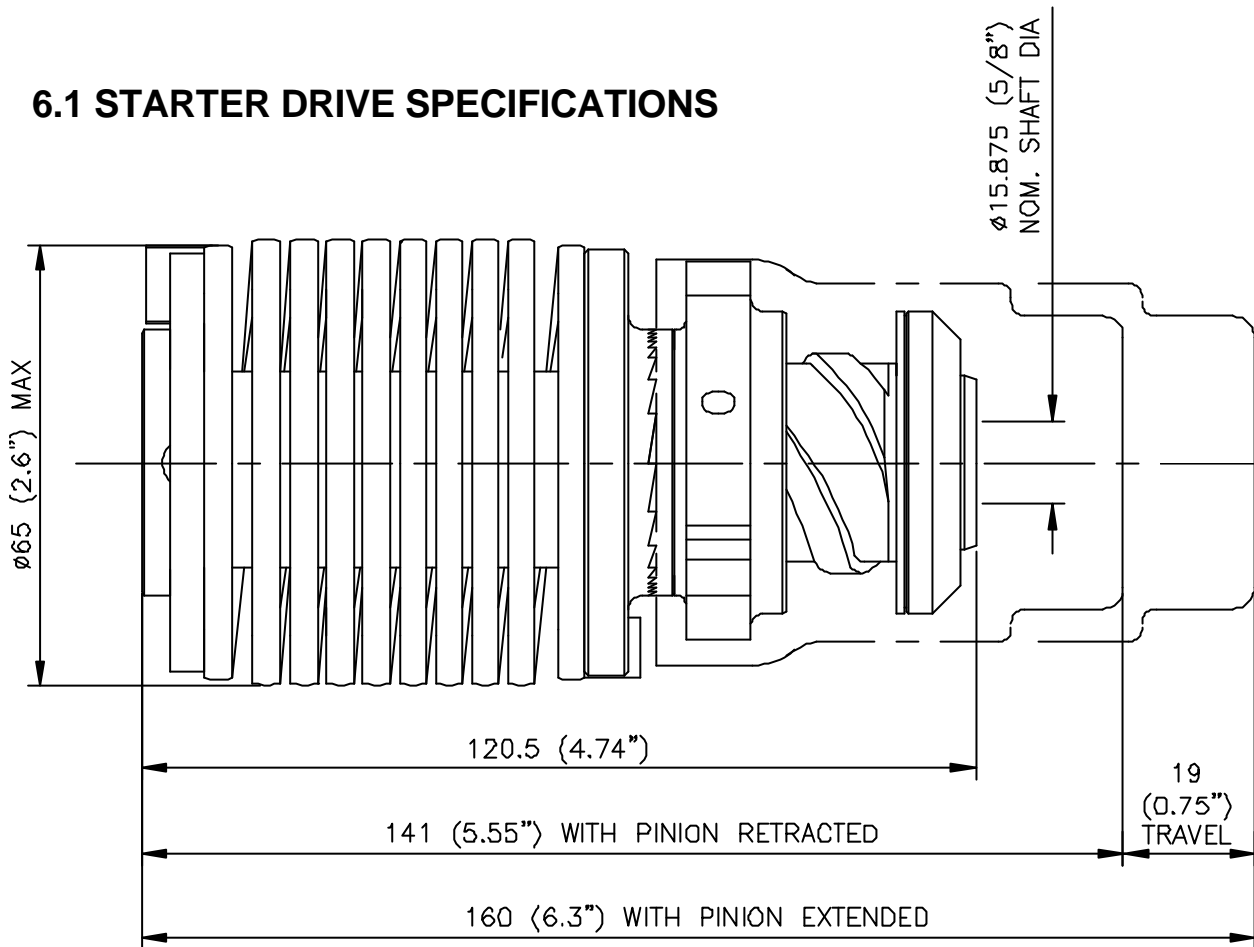


## 6. STARTER DRIVE

### 6.1 STARTER DRIVE SPECIFICATIONS



**Part number:**

**M22-23** (Bare starter drive with no pinion gear)

See "PINION GEAR DETAILS AND DIMENSIONS" on page 12-6 for part numbers for a starter drive with pinion gear and circlip.

**Features:**

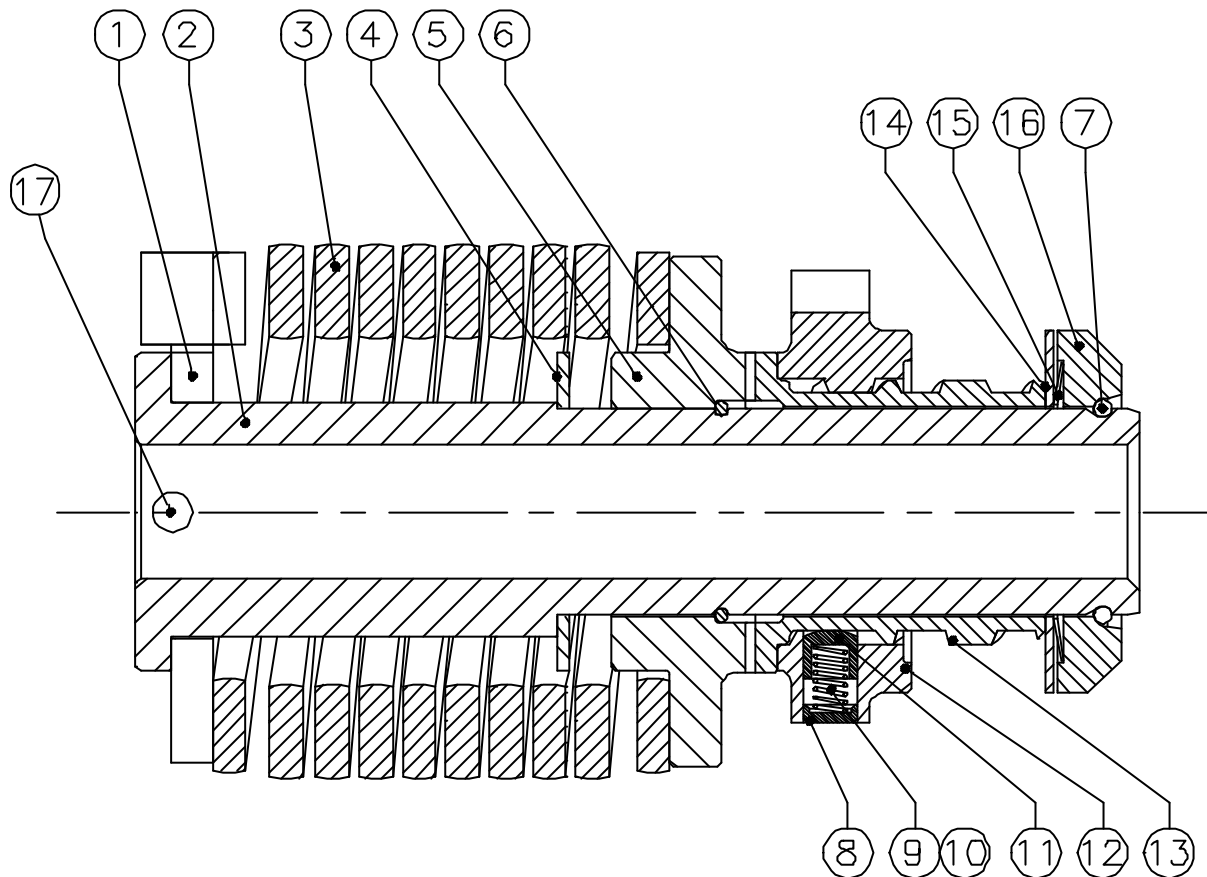
- ? Robust construction
- ? Repairable
- ? Non-sparking, beryllium copper pinions available in marinised anti-corrosion option

**Specifications:**

Mass	1.43 kg (3.1 lbs)
Construction	Alloy steel
Speed range	0-7000 rpm
Disengagement speed	3500-4000 rpm
Rotation	CW (standard)
Shaft attachment	Keyed
Pinion options	See data sheet on page 12-6

Specifications are subject to change without prior notice due to product improvements.

## 6.2 STARTER DRIVE PARTS LIST



Item	Description	Qty	Part no.	Item	Description	Qty	Part no.
1	Drive washer	1	M22-23-01	10	Detent spring	1	M22-23-10
2	Spindle	1	M22-23-02	11	Plunger	2	M22-23-11
3	Torsion spring	1	M22-23-03	12	Helix nut	1	M22-23-12
4	Thrust washer	1	M22-23-04	13	Helix shaft	1	M22-23-13
5	Clutch	1	M22-23-05	14	Thrust washer	1	M22-23-14
6	Retaining ring	1	M22-23-06	15	Bevel washer	1	M22-23-15
7	Retaining ring	1	M22-23-07	16	Stop ring	1	M22-23-16
8	Plug	2	M22-23-08	17	Locating screw	1	M22-23-17
9	Anti-drift spring	1	M22-23-09				

Due to the need to test the disengagement speed with specialised equipment, it is not recommended that starter drives be dismantled or attempted to be repaired.

Specifications are subject to change without prior notice due to product improvements.